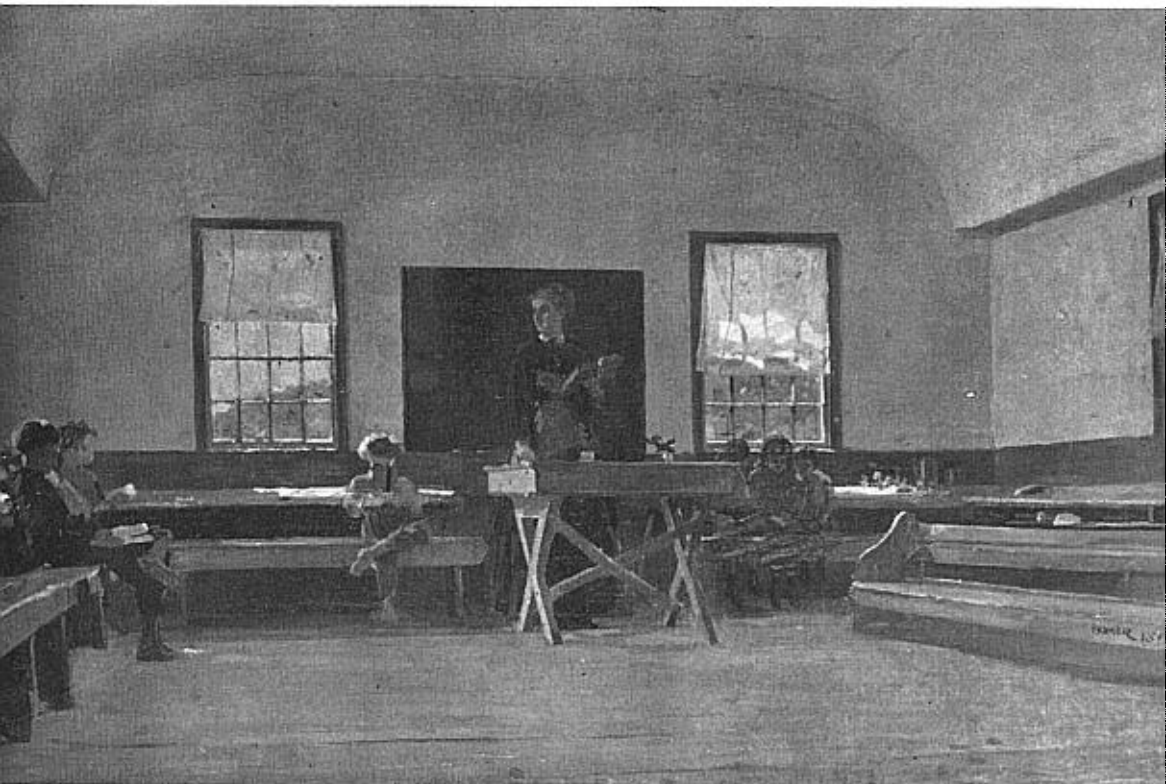


# OLD-TIME NEW ENGLAND

---



---

The Bulletin of THE SOCIETY FOR THE PRESERVATION  
OF NEW ENGLAND ANTIQUITIES

*Harrison Gray Otis House, 141 Cambridge Street, Boston*

Vol. XLVI, No. 3

Winter 1956

Serial No. 163

# The Society for the Preservation of New England Antiquities

HARRISON GRAY OTIS HOUSE, 141 Cambridge Street, Boston 14, Massachusetts



STEPHEN B. LUCE, *President*

ARTHUR S. DEWING, *Vice-President*

BERTRAM K. LITTLE, *Director and Corresponding Secretary*

SUMNER APPLETON WELD, *Recording Secretary*    GUY W. WALKER, JR., *Treasurer*

BUCHANAN CHARLES, *Librarian*    RUSSELL H. KETTELL, *Director of Museum*

ABBOTT LOWELL CUMMINGS, *Assistant Director and  
Editor of OLD-TIME NEW ENGLAND*

CHRISTOPHER J. FITZPATRICK, JR., *Assistant Treasurer*    LEA S. LUQUER, *Curator of Museum*

MISS E. FLORENCE ADDISON, *Assistant to the Director*

MISS CLIO N. CRANDALL, *Membership Secretary*

ROY W. BAKER, *Supervisor of Properties*

## STATE VICE-PRESIDENTS

### *California*

HULETT C. MERRITT, Pasadena

### *Connecticut*

MRS. WILMARTH S. LEWIS, Farmington

### *Maine*

HAROLD N. HANOLD, Standish

### *New Hampshire*

HARLAND G. LITTLE, Hampton

### *New Jersey*

MRS. GERALDINE R. DODGE, Madison

### *Ohio*

MRS. JOSEPH T. WEARN, Chagrin Falls

### *Rhode Island*

MRS. HAROLD BROWN, Newport

### *Vermont*

HALL PARK McCULLOUGH, No. Bennington

## TRUSTEES

### 1953-1956

MRS. JAMES B. AYER, Milton

MRS. EDWARD F. TIMMINS, Boston

WALTER M. WHITEHILL, North Andover

EDWARD A. TAFT, Boston

### 1954-1957

MRS. THEODORE L. BADGER, Chestnut Hill

MISS ROSAMOND THAXTER, Kittery Point, Maine

GILBERT R. PAYSON, Brookline

H. WADE WHITE, Boston

### 1955-1958

MRS. FRANCIS B. CROWNINSHIELD, Boston

MISS ESTHER FORBES, Worcester

EDWARD P. HAMILTON, Milton

WILLIAM G. PERRY, Andover

## Table of Contents

NOTES ON FURNISHING THE SEVENTEENTH-CENTURY HOUSE . . . . .  
. . . . . by *Abbott Lowell Cummings* 57

WHERE WAS THE INDIAN BRIDGE OVER IPSWICH RIVER? . . . . .  
. . . . . by *Lura Woodside Watkins* 68

JOHN PIERCE BRACE, SCHOOLMASTER . . . . . by *Harriet Webster Marr* 72

FISHERMEN'S SAILING MODELS . . . . . by *Dohn A. Cluff* 77

OLD-TIME NEW ENGLAND PRIMER OF PRESERVATION—WALLPAPER  
. . . . . by *Dorothy S. Waterhouse* 79

AN EIGHTEENTH-CENTURY BUILDER'S CONTRACT 81

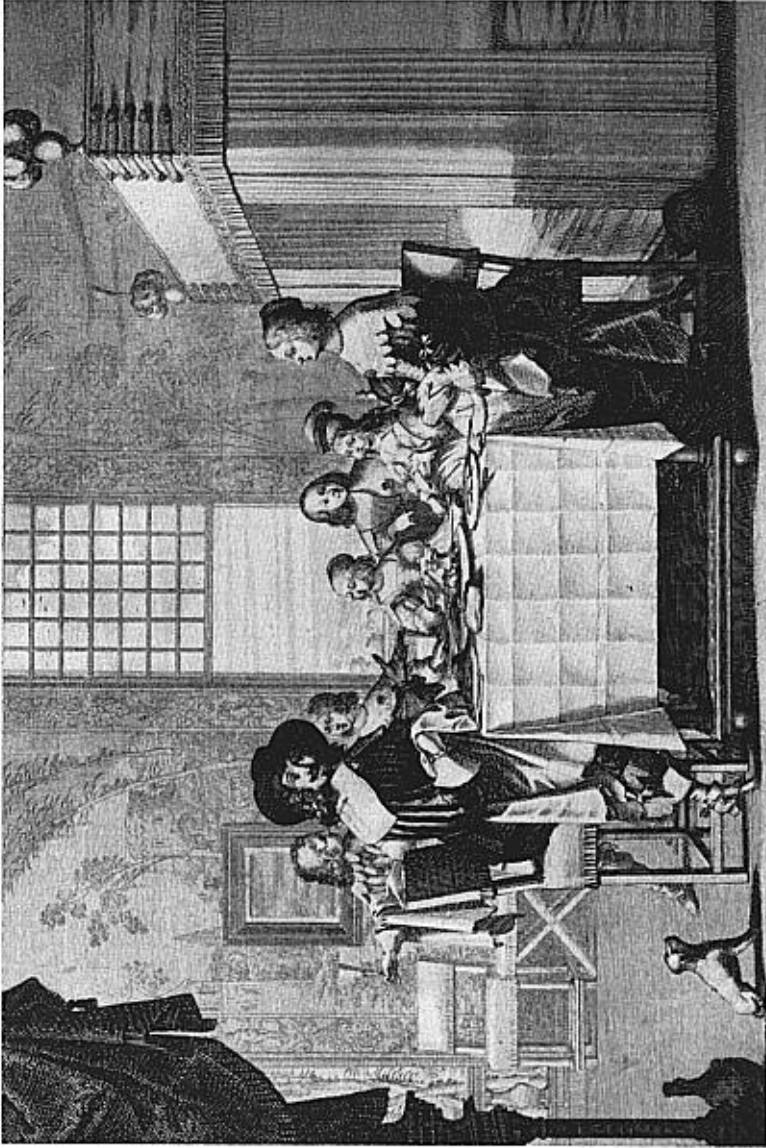
COVER: "New England Country School" by *Winslow Homer*, 1878.  
Courtesy of the Addison Gallery of American Art, Phillips Academy, Andover.

THREE DOLLARS PER ANNUM

SINGLE COPY, SEVENTY-FIVE CENTS

Entered as second-class matter September 19, 1920, at the Post Office at Boston, Massachusetts, under the Act of August 24, 1912. Acceptance for mailing at special rates of postage provided for in section 1103, Act of October 3, 1917, authorized April 1, 1924.

*Copyright, 1956, The Society for the Preservation of New England Antiquities*



FAMILY DINING IN ROOM WITH BED. ENGRAVING BY ABRAHAM BOSSE, FRENCH  
(1602-1676).