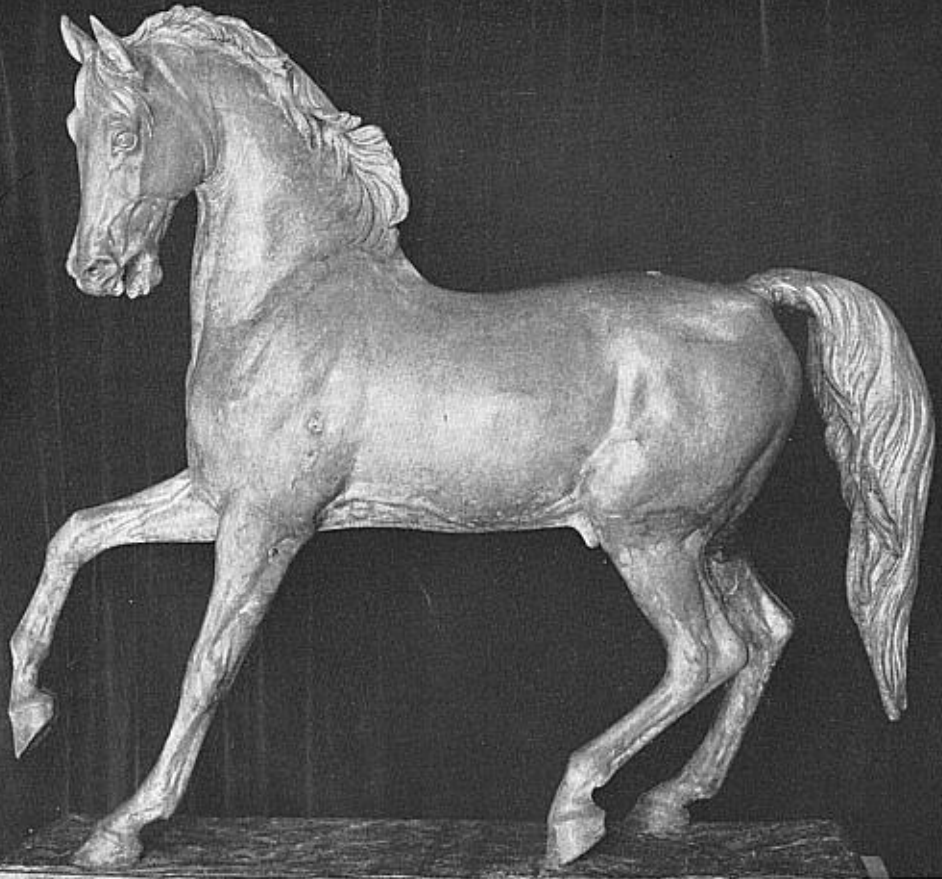


# OLD-TIME NEW ENGLAND

---



---

The Bulletin of THE SOCIETY FOR THE PRESERVATION  
OF NEW ENGLAND ANTIQUITIES

*Harrison Gray Otis House, 141 Cambridge Street, Boston*

Vol. LIII, No. 3

Winter 1963

Serial No. 191

# The Society for the Preservation of New England Antiquities



CHARLES F. BATCHELDER, *President*  
WILLIAM ENDICOTT II, *Vice-President*  
BERTRAM K. LITTLE, *Director and Corresponding Secretary*  
SUMNER APPLETON WELD, *Recording Secretary*    EDWARD L. BIGELOW, *Treasurer*  
WALTER M. WHITEHILL, *Librarian*    WILLIAM HENRY HARRISON, *Director of Museum*  
ABBOTT LOWELL CUMMINGS, *Assistant Director and*  
*Editor of OLD-TIME NEW ENGLAND*  
WILLIAM CALEB LORING, *Assistant Treasurer*    LEA S. LUQUER, *Curator of Museum*  
MISS E. FLORENCE ADDISON, *Assistant to the Director*  
MISS CAROLINE COLE HOLLINGSWORTH, *Registrar*  
MISS DIANA PARKER, *Secretary*  
MRS. ELSIE E. GRAVES, *Membership Secretary*  
HARRY A. MERCHANT, *Superintendent*  
HARTWELL POND, *Supervisor of Properties*

## STATE VICE-PRESIDENTS

<i>California</i>	<i>New Hampshire</i>
MRS. DOROTHY APPLETON WELD, Santa Barbara	RALPH MAY, Portsmouth
<i>Connecticut</i>	<i>New Jersey</i>
NEWTON C. BRAINARD, Hartford	MRS. GERALDINE R. DODGE, Madison
<i>Delaware</i>	<i>New York</i>
HENRY F. DU PONT, <i>Wintertthur</i>	IRVING S. OLDS, New York City
<i>Illinois</i>	<i>Rhode Island</i>
RUSSELL TYSON, Chicago	JOHN NICHOLAS BROWN, Providence
<i>Maine</i>	<i>Vermont</i>
STEPHEN WHEATLAND, Bangor	HALL PARK McCULLOUGH, No. Bennington

## TRUSTEES

1960-1963	1961-1964
MRS. STEPHEN PAINE, Millis	MRS. RONALD T. LYMAN, JR., Boston
MRS. CLIFFORD A. WATERHOUSE, Boston	MISS GERTRUDE TOWNSEND, Boston
WILLIAM KING COVELL, Newport, R. I.	FREDERICK J. BRADLEE, Beverly
ALBERT W. RICE, Worcester	THOMAS C. DUNNINGTON, Dover, N. H.
1962-1965	
MRS. WILLIAM SLATER ALLEN, Providence, R. I.	
MRS. ROGER H. HALLOWELL, Westwood	
THEODORE CHASE, Dover	
WALTER K. SHAW, JR., Concord	

## Table of Contents

THE ART OF RICHARD GREENOUGH . . . . . by *Thomas B. Brumbaugh* 61

AN EARLY WELL HOUSE, STURBRIDGE, MASSACHUSETTS by *John Obed Curtis* 79

YANKEE PLUCK AT BIRD ISLAND LIGHT . . . . . by *Lawrence B. Romaine* 83

COVER: *Lead horse (one of a pair), mid-nineteenth century, attributed to Richard S. Greenough.* Courtesy of The Detroit Institute of Arts.

---

---

THREE DOLLARS PER ANNUM

SINGLE COPY, SEVENTY-FIVE CENTS

Second-class postage paid at Boston, Massachusetts, and at additional mailing offices.

*Copyright, 1963, The Society for the Preservation of New England Antiquities*