

Old-Time & New England



A PUBLICATION OF THE SOCIETY FOR THE
PRESERVATION OF NEW ENGLAND ANTIQUITIES

VOLUME 75
NUMBER 263
1997

Officers and Trustees

Jane C. Nylander	<i>President</i>
Peter Madsen	<i>Chairman</i>
Anthony Pell	<i>First Vice Chair</i>
Martha Hamilton	<i>Second Vice Chair</i>
Roger Servison	<i>Secretary</i>
Robert I. Owens	<i>Treasurer</i>

Theodore Alford
Charles Batchelder
Ann Beha
Harold J. Carroll, Esq.
Désirée Caldwell
Alan Emmet
Barbara Glauber
Betsy Shure Gross
Richard H. Harris
Mary Ford Kingsley
John B. Little, M.D.
Janina Longtine, M.D.
Joseph Pellegrino
Patricia Poore
Marion Pressley
Carla W. Ricci
Caroline B. Stride
Charles M. Sullivan

Mission

Founded in 1910, the Society for the Preservation of New England Antiquities is a museum of cultural history that preserves, interprets, and collects buildings, landscapes, and objects reflecting New England life from the seventeenth century to the present, for the enjoyment and benefit of all.

SPNEA promotes the highest standards of excellence in preservation, makes its technical expertise widely available, and uses its nationally significant collections as the basis for educational programs, exhibitions, research, and publications to further the appreciation and understanding of New England culture.

Old-Time &
New England

1997

SOCIETY FOR THE PRESERVATION OF
NEW ENGLAND ANTIQUITIES

OLD-TIME NEW ENGLAND
VOLUME 75, NUMBER 263
COPYRIGHT 1997 BY THE
SOCIETY FOR THE PRESERVATION
OF NEW ENGLAND ANTIQUITIES
ALL RIGHTS RESERVED. ISSN 00302031.

Old-Time New England IS A PUBLICATION
OF THE SOCIETY FOR THE PRESERVATION OF
NEW ENGLAND ANTIQUITIES,
WITH OFFICES AT
141 CAMBRIDGE STREET, BOSTON,
MASSACHUSETTS 02114.

BOOK DESIGN BY DEFRANCIS STUDIO,
BOSTON, MASSACHUSETTS, AND
FONT & CENTER PRESS,
WESTON, MASSACHUSETTS.
PRINTED BY THE SMITH PRINT INC.,
NORWELL, MASSACHUSETTS.

Cover: Built ca. 1687, the William Boardman House of Saugus is one of few surviving seventeenth-century dwellings at Massachusetts Bay for which a seventeenth-century inventory exists. That document, compiled in 1696, documents that the rear lean-to and the flue for an eventual third hearth had been added to the house between 1687 and 1696, a pattern of incremental expansion common to many first-period homes. The Boardman House is now an SPNEA study property. See Abbott Lowell Cummings, "Three Hearths: A Socio-cultural Study of Seventeenth-Century Massachusetts Bay Probate Inventories" in this issue.

A journal devoted to the architecture,
landscapes, and material culture of the
people of New England

Old-Time New England

Three Hearths:
A Socioarchitectural Study
of Seventeenth-Century
Massachusetts Bay Probate
Inventories

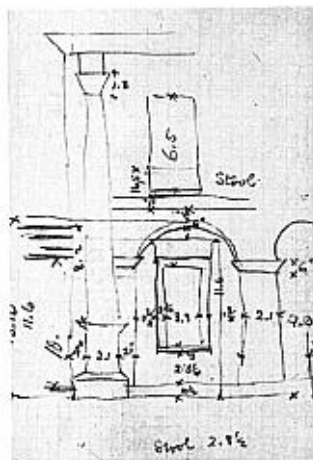
Abbott Lowell Cummings 5

Inside SPNEA:
Drawings from the Office
of Ogden Codman, Jr.

Stuart A. Drake 50

The Howland Mill Village:
A Missing Chapter in Model
Workers' Housing

Kingston Wm. Heath 64



To subscribe to *Old-Time New England*, please send a check for \$35 payable to SPNEA to SPNEA Subscriptions, 141 Cambridge Street, Boston, MA 02114.

Copies of selected back issues are available. Please call the Merchandise Department at (617) 227-3956 for information.